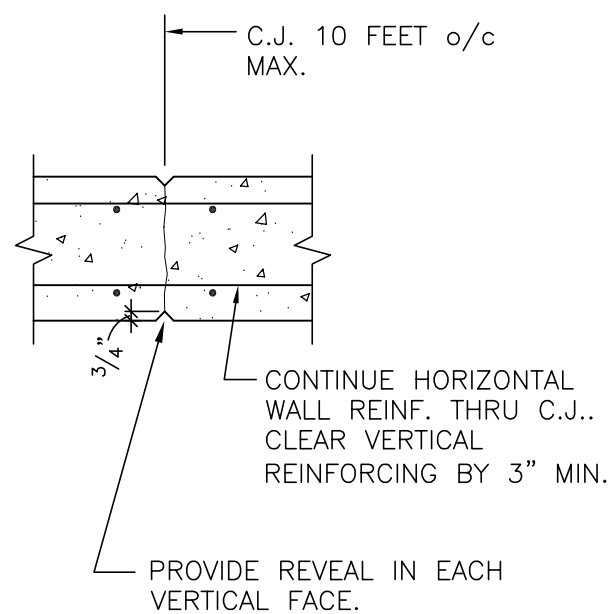
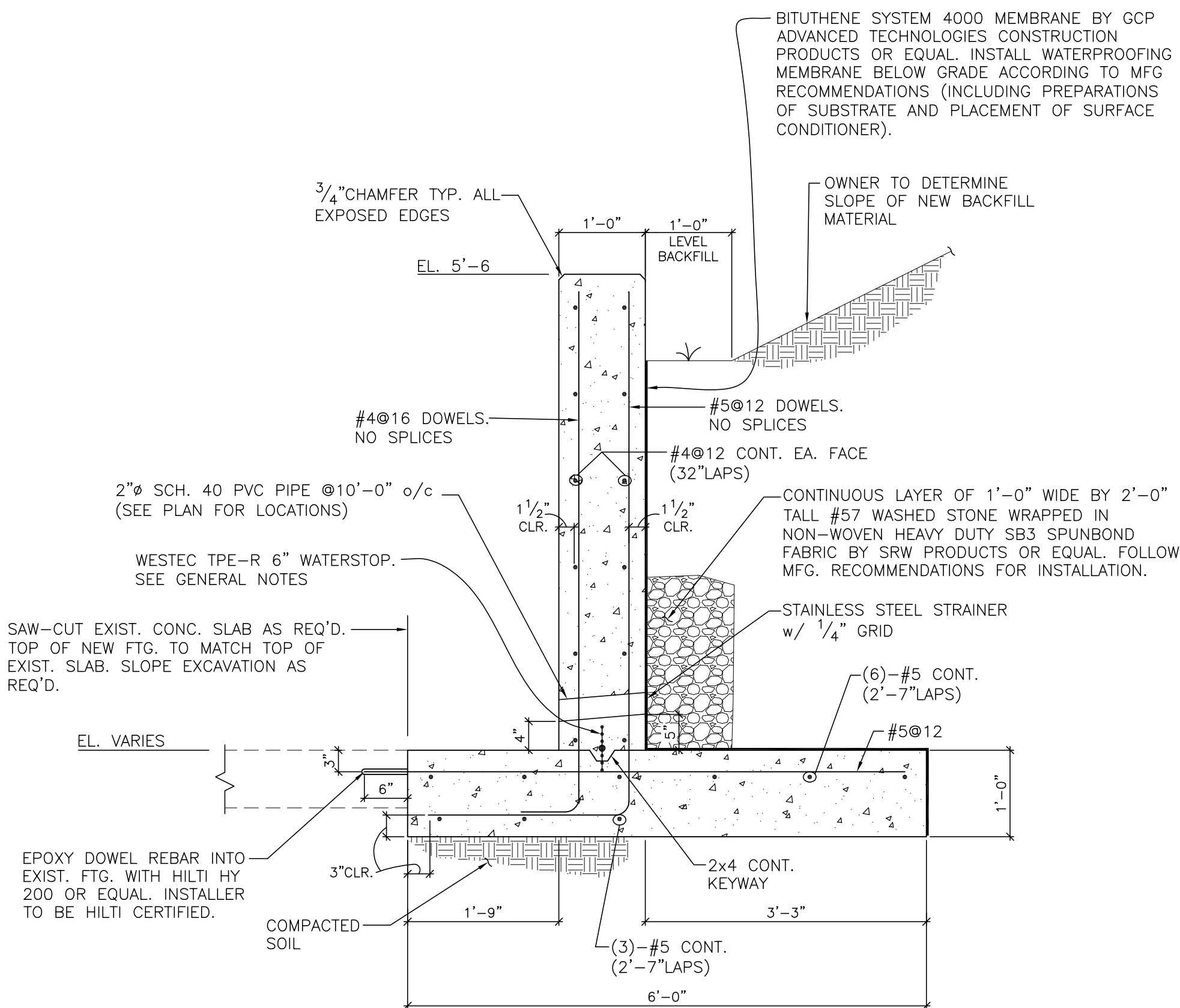
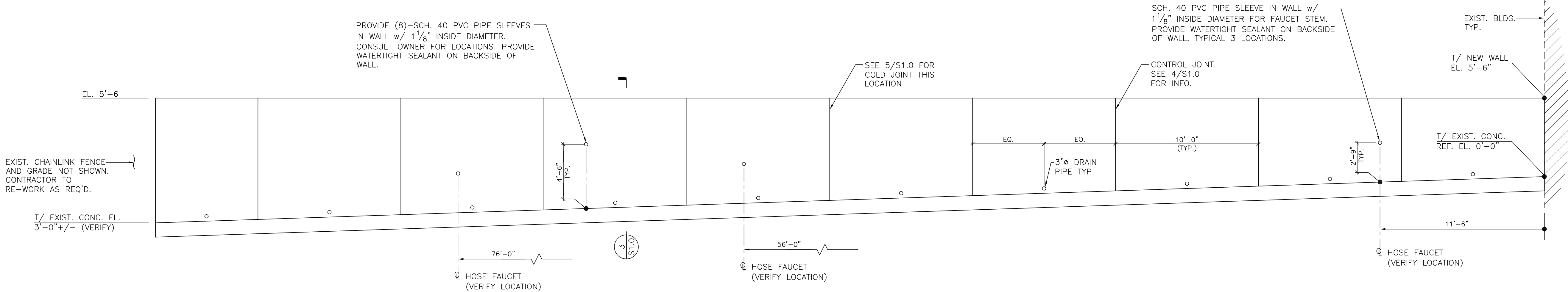
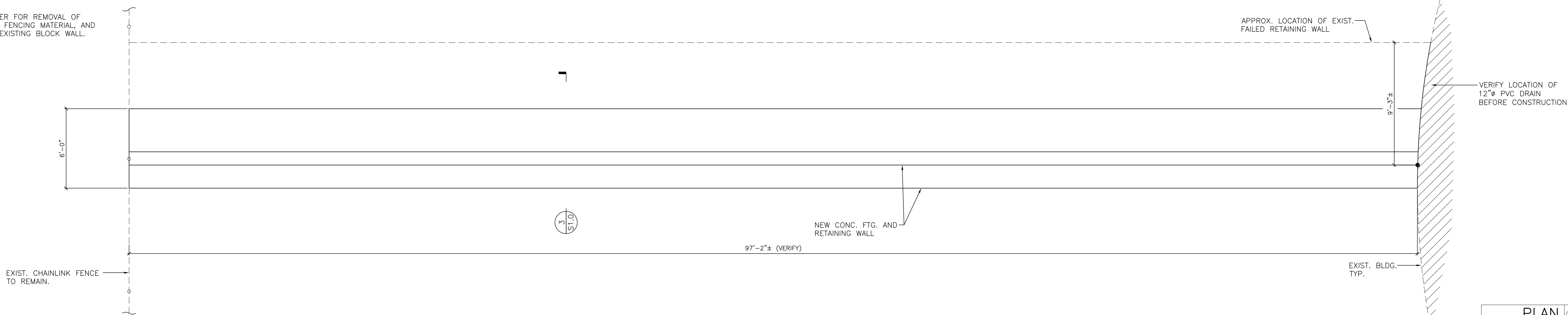
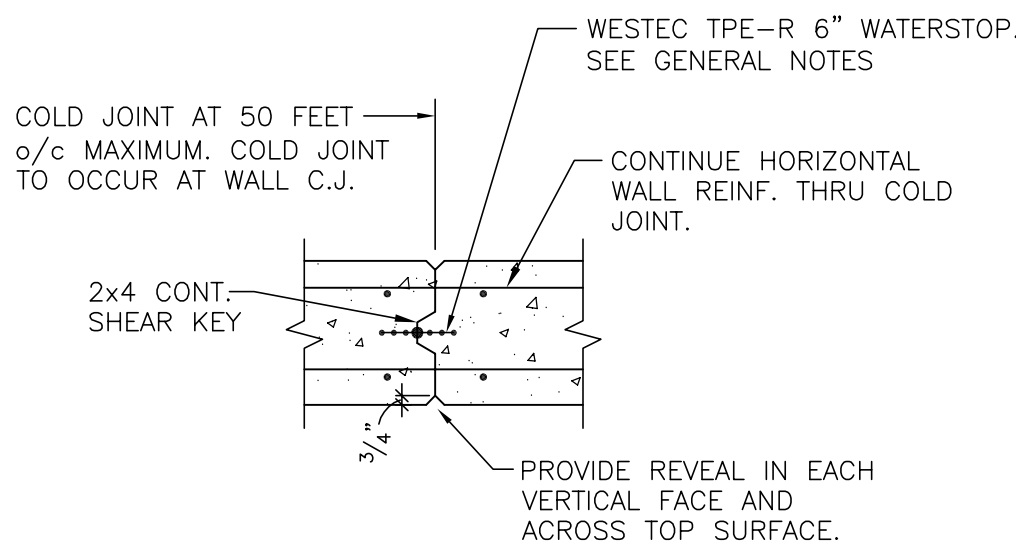


NOTE: CONSULT OWNER FOR REMOVAL OF EXIST. DEBRIS, FENCING MATERIAL, AND PORTIONS OF EXISTING BLOCK WALL.



TYPICAL WALL C.J.
3/4" = 1'-0"



TYP. WALL COLD JOINT
3/4" = 1'-0"

Fleming & Associates, P.A. Scope of Work:
Structural design of approximately 97'-2" long cast-in-place concrete retaining wall.

SCOPE OF WORK
1/4" = 1'-0"

General Notes

1. Materials

- A. Concrete
- f'c = 4500 psi Reg. wt.
All concrete to have max W/C ratio of 0.40.
Air content = 6% (±1.5%).
Max. Slump = 4"
- B. Reinforcing Steel
- ASTM A-615 Grade 60

2. Miscellaneous

- A. Presumptive soil properties:
Allowable Bearing Pressure = 1800 psf.
Angle of Internal Friction = 32 degrees
Soil Unit Weight = 120 pcf
Friction Factor = 0.45
General Contractor to verify verify allowable soil bearing pressure. Notify Structural Engineer if the soil bearing pressure is less than the allowable presumptive soil bearing capacity.
- B. A horizontal shear key with reinforcing continuous through the joint will be used at all cold joints in continuous wall footings.
- C. Compact bottom of all footing excavations with a vibratory hand operated compactor before placing reinforcing in footing excavations.
- D. The general contractor will coordinate and lower wall footings where required to be below any new or existing utility lines. Notify Engineer of any footing adjustment required before beginning work.
- E. No heavy equipment will be used within 8 feet of all retaining walls.
- F. No backfill is to be placed against retaining walls until concrete has reached 75% design strength. Leave wall forms in place for 7 days minimum.
- G. General Contractor to notify our office during major phases of construction so observations can be made by our office as required.

3. Waterstop

- A. All water stops will be Westec TPE-R waterstops using Envirostop TPER Profile No. 619.
- B. Follow recommendations by Greenstreak, Inc. for field splicing at all joints. Use a heated splicing iron to heat weld butt splices.
- C. Consult with manufacturer about factory punched holes and hog rings and hog ring pliers for use during installation.

GENERAL NOTES
NO SCALE

FLEMING & ASSOCIATES, P.A.
STRUCTURAL ENGINEERING • FORENSICS • ROOFING DESIGN

1004 HAY STREET, FAYETTEVILLE, NC 28305
OFFICE 910-433-2825
FAX 910-433-2804
www.flemingandassociates.com



This drawing and the design shown are the property of Fleming and Associates, P.A.. The reproduction, copying or other use of this drawing without their written consent is prohibited and any infringement will be subject to legal action.
© Fleming 2017

RETAINING WALL DESIGN

Crown Coliseum
Fayetteville, NC



PROJECT TEAM

DESIGNED BY:
SF

DRAWN BY:
BF

CHECKED BY:
SF

REVISIONS

NO. REASON DATE

Retaining Wall
Plan, Elevation,
Sections, and
Notes

DATE

09/18/2017

PROJECT NO.

17-102

SHEET NUMBER

S1.0