

**NOTES**

A FILL DEPTH, SAW CUT SHALL BE MADE AND EXISTING CONCRETE REMOVED IN ACCORDANCE WITH PLAN DETAILS.

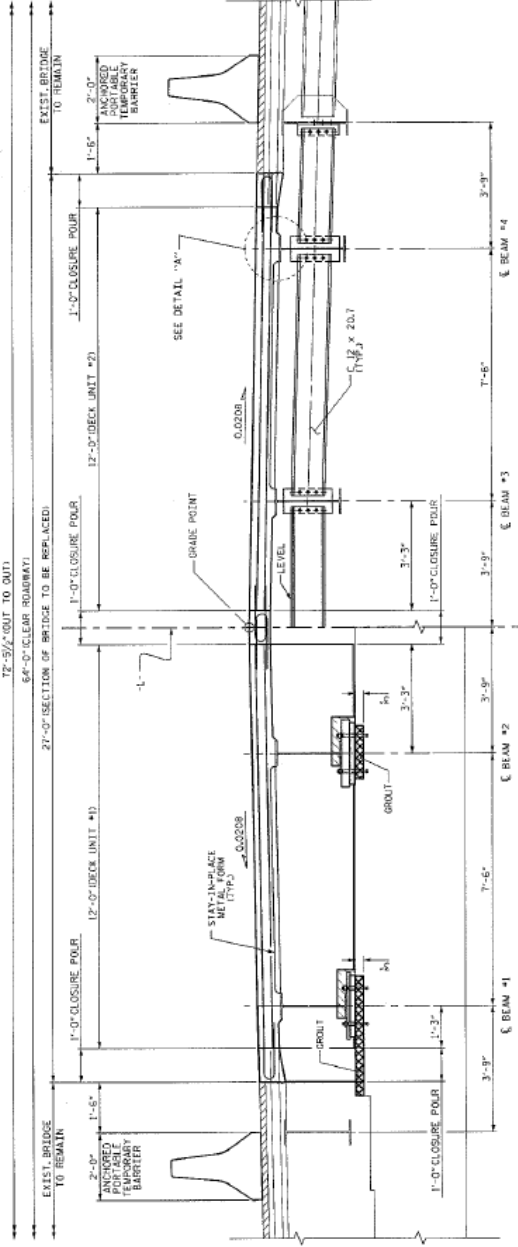
THE CONTRACTOR MAY, WHEN NECESSARY, PROPOSE A SCHEME FOR SUPPORTS OR FORMS AND END DIFFUSERS OR END CONNECTOR PLATES. THE SCHEME SHALL BE APPROVED BY THE ENGINEER BEFORE THE FORM WORKING DRAWINGS FOR THE METAL STAY-IN-PLACE BRIDGE SEAT ELEVATIONS ARE TO BE VERIFIED BY THE ENGINEER BEFORE PLACEMENT OF DECK UNITS.

FOR DECK UNIT CONSTRUCTION SEQUENCE, SEE TYPICAL SECTION SHEET 2 OF 3.

DECK UNITS SHALL BE CONSTRUCTED IN ACCORDANCE WITH ALL APPLICABLE SECTIONS OF THE STANDARD SPECIFICATIONS.

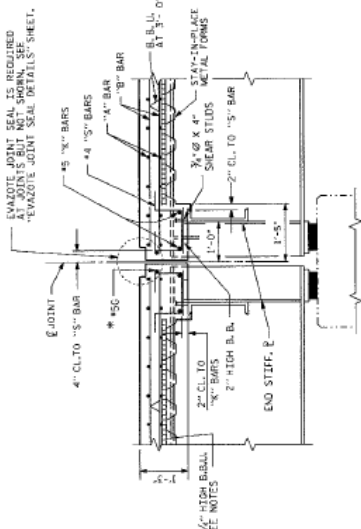
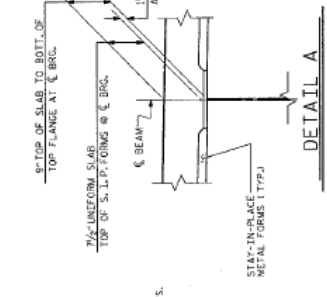
**STRUCTURAL STEEL QUANTITIES**

APPROXIMATE TOTAL 39,600 LBS



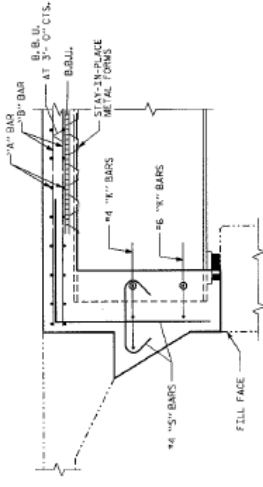
**TYPICAL SECTION**  
SHOWING INTERMEDIATE DIAPHRAGMS

**PART. SECTION**  
SHOWING CURTAIN WALL & END BENTS



**SECTION AT BENT**

\* SEE NOTES FOR JOINT SEAL DETAILS AS NECESSARY, TO CLEAN DIAPHRAGMS AND REINFORCING STEEL.



**SECTION AT END BENT**

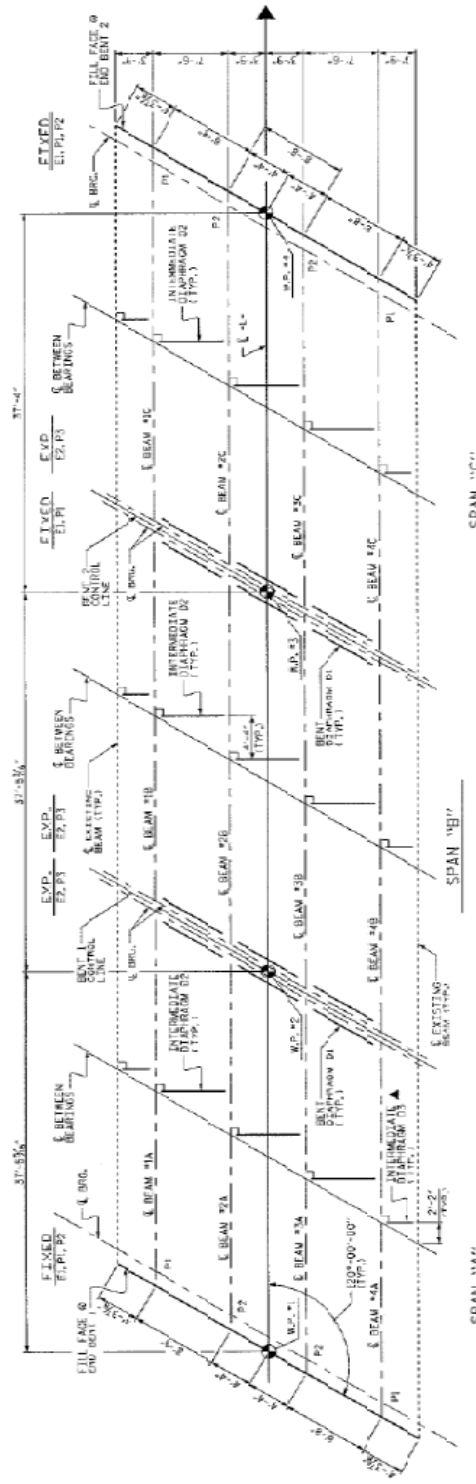
BRIDGE NO. 67  
WATAUGA COUNTY  
STATION: 54+86.50 -L-

STATE OF NORTH CAROLINA  
DEPARTMENT OF TRANSPORTATION  
SUPERSTRUCTURE  
TYPICAL SECTION



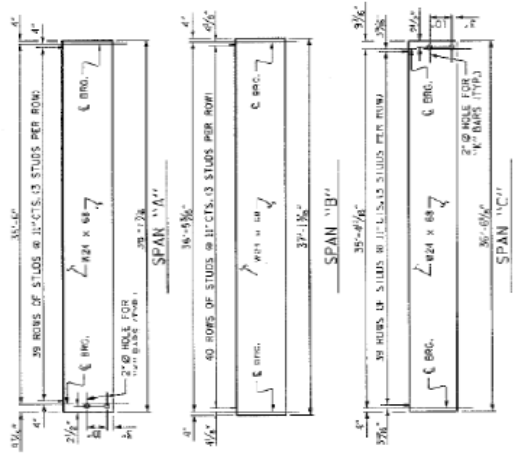
REV	DATE	BY	CHKD	SHEET NO.
1				66/6

DRAWN BY: _____	SCALE: _____	DATE: _____
CHECKED BY: _____	DATE: _____	

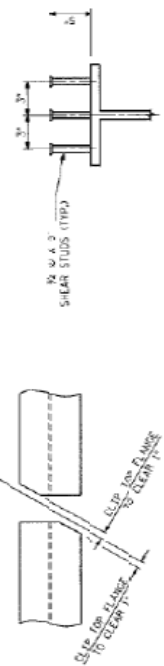


FRAMING PLAN

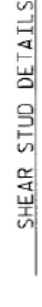
▲ FOR INTERMEDIATE DIAPHRAGMS, AS SHOWN, USE SHEET BE LOCATED BY THE CONTINUATION.



BOTTOM FLANGE DETAIL



TOP FLANGE CLIP DETAIL



BRIDGE NO. 67  
 WAIALUA COUNTY  
 STATION 54+26.50 -1-

STATE OF HAWAII  
 DEPARTMENT OF TRANSPORTATION  
 DESIGN

SUPERSTRUCTURE  
 FRAMING PLAN



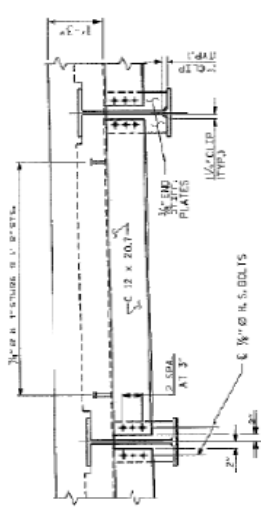
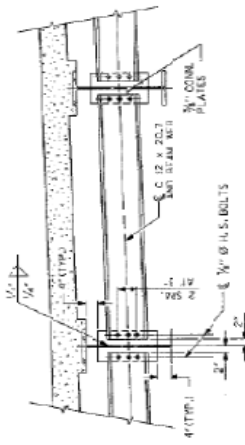
SHEET NO. 4 OF 4

NO.	REVISIONS	DATE	BY
1			
2			
3			
4			

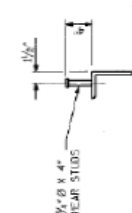
DRAWN BY: W.A. ALLEN DATE: 6-8-11  
 CHECKED BY: J.M. SHARPE DATE: 7-1-11

**NOTES**

ALL STRUCTURAL STEEL SHALL BE FABRICATED ACCORDING TO AISC SPECIFICATION 360 AND PAINTED IN ACCORDANCE WITH SYSTEM 1 OF ARTICLE 402.7 OF THE STANDARD SPECIFICATIONS UNLESS OTHERWISE NOTED ON OTHER SHEETS.  
 ALL CONNECTIONS SHALL BE DESIGNED TO BE SUBJECT TO BOTH TENSION AND COMPRESSION UNLESS OTHERWISE NOTED.  
 ALL STEEL CONNECTIONS TO BE SUBJECT TO HIGH STRENGTH BOLTS, SEE SPECIAL PROVISIONS.  
 WHERE DIMENSIONS ARE TO BE BOLTED TO EXISTING STEEL MEMBERS, DO NOT REMOVE PAINT FROM THE CONTACT SURFACE.  
 NO SHIP CAMBER REQUIRED, TURN MATERIAL WILL CAMBER UP.  
 THE EXISTING BRIDGE IS ON A TANGENT AND 0% GRADE. THE NEW BRIDGE SHALL MAINTAIN THE EXISTING ALIGNMENT AND GRADE.

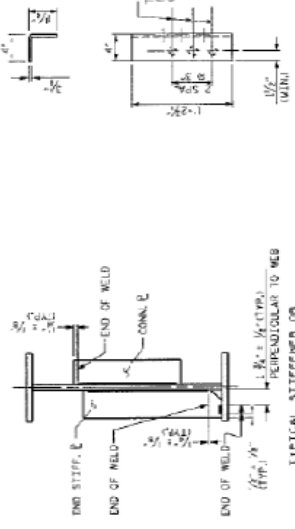
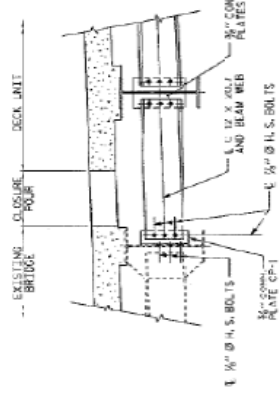


TYPICAL BENT DIAPHRAGM D1

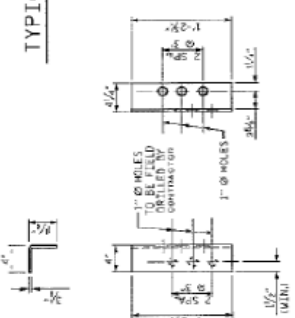


SHEAR STUD DETAILS

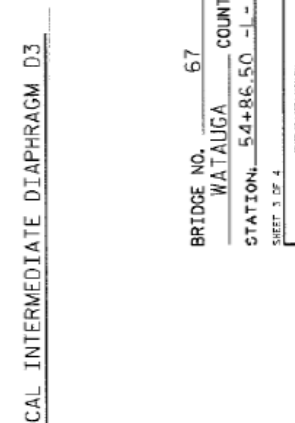
TYPICAL INTERMEDIATE DIAPHRAGM D2



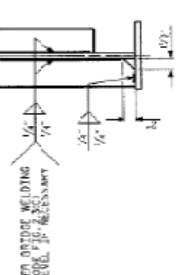
WELD TERMINATION DETAILS



CONNECTOR PLATE DETAIL (CP-1)



TYPICAL INTERMEDIATE DIAPHRAGM D3



CONN./STIFF. PLATE DETAILS

BRIDGE NO. 67  
 WATAUGA COUNTY  
 STATION: 54+86.50 -1-

SHEET 3 OF 4  
 DEPARTMENT OF TRANSPORTATION  
 SUPERSTRUCTURE  
 STRUCTURAL STEEL  
 DETAILS



DATE: 2-11-88  
 DRAWN BY: W. J. MILLER  
 CHECKED BY: D. R. STONE

**NOTES**

1. ALL BEARING SURFACES SHALL BE FINISHED TO A SMOOTH SURFACE WITH A SHARP POINTED TOOL. THE SURFACES SHALL BE FINISHED WITH A SHARP POINTED TOOL. THE 2" PIPE SLEEVE SHALL BE CUT FROM SCHEDULE 40 PIPE TO THE DIMENSIONS OF ASTM A106. THE PARTS FOR THE PIPE SLEEVES SHALL BE INCLUDED IN THE SEVERAL PAY ITEMS.

2. FOR PAINTED STRUCTURAL STEEL, SEALING PLATES, ANCHOR BOLTS, NUTS AND WASHERS SHALL BE GALVANIZED IN ACCORDANCE WITH THE STANDARD SPECIFICATIONS.

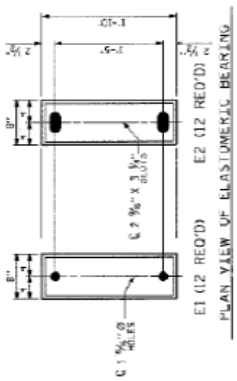
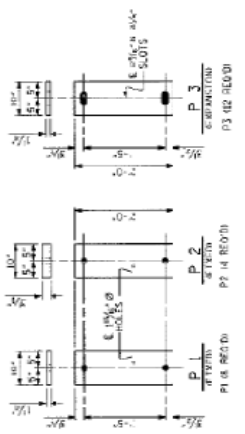
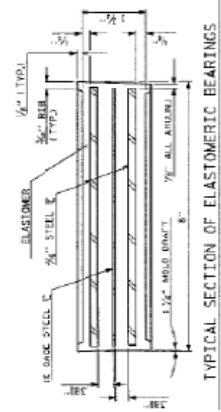
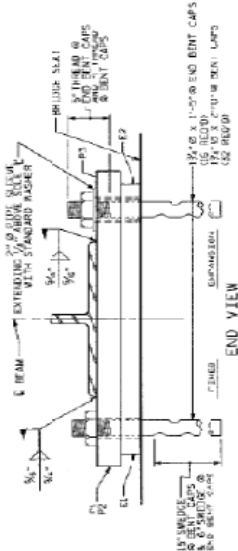
3. ALL BEARING PLATES SHALL BE A615 TO MEET GRADE 50.

4. ANCHOR BOLTS SHALL MEET THE REQUIREMENTS OF ASTM A490. ANCHOR BOLTS SHALL BE GALVANIZED IN ACCORDANCE WITH THE STANDARD SPECIFICATIONS. NUTS AND WASHERS SHALL MEET THE REQUIREMENTS OF ASTM A490. NUTS AND WASHERS SHALL BE GALVANIZED IN ACCORDANCE WITH THE STANDARD SPECIFICATIONS. SHOP INSPECTION IS REQUIRED.

5. WHEN FIELD WELDING THE SOLE PLATE TO THE OTHERS PLATE, USE OF AUTOMATIC WELDING SHALL BE PERMITTED. WELD METALS SHALL NOT EXCEED 200°F. TEMPERATURES ABOVE THIS MAY DAMAGE THE ELASTOMER.

6. ALL SURFACES OF BEARING PLATES SHALL BE SMOOTH AND STRAIGHT.

-LOAD RATINGS-	
TYPE I	WASH DC-111
TYPE II	91 K
TYPE III	118 K
	148 K



BRIDGE NO. 67  
 WATAUGA COUNTY  
 STATION: 54+86.50 -L-

SHEET 4 OF 4

STATE OF NORTH CAROLINA  
 DEPARTMENT OF TRANSPORTATION  
 STANDARD  
 ELASTOMERIC BEARING  
 DETAILS  
 (STIFF SUPERSTRUCTURE)

DATE	BY	CHKD	APP'D	SHEET NO.
				4



W. A. ALLEN  
 ENGINEER  
 No. 1077  
 STATE OF NORTH CAROLINA  
 EXPIRES 5/31/58