

XBEW Type 1, Baffle Filter Single Wall - Exhaust Only Wall Canopy

Model	Hood Length (in.)	Width (in.)	Bottom Width (in.)	Height (in.)		Exhaust Volume (CFM)	Exhaust SP (in. w.g.)	Double Island
				Front	Back			
XBEW	120	51	51	24	24	2250	0.454	No

Selected Options & Accessories:

Option or Accessory	Description
Mounting Height	78 in. off Finished Floor.
Integral Air Space	Factory Mounted on Back - 3" wide
Non-Integral Air Space	Factory Mounted on Left - 3" wide
Ceiling Enclosures	7 in. High on Left Front Right
Filter Type	Aluminum Baffle Filters
Right Utility Cabinet	51 in Long 12 in Wide 24 in High
Backsplash Panel	78 in High 135 in Long 0 in Wide
Left Sidesplash	78 in High 51 in Long 0 in Wide

Material: 430 SS Where Exposed
UL Listing: UL 710 w/out Exhaust Fire Damper

Features:
 Performance Enhancing Lip (PEL)
 Standing Seam Construction for Superior Strength
 Stainless Steel Finish for Higher Corrosion Resistance

Hood End Conditions:
 Back Wall - Limited Combustible
 Left Full Wall - Limited Combustible

Section Data:

Section Num.	Length (in.)	Volume (CFM)	SP (in. wg)	Filter Qty		Filter Ht. (in.)	Temp. Rating	Light Qty	Light Type	Foot Candles	Drain Location	Weight (lbs)
				16" W	20" W							
1	120	2250	0.454	0	6	20	600 deg F	8	Incandescent	58.1	Right	365

Exhaust Collar Data:

Section Num.	Collar Num.	Collar Size (LxW) in. or Diameter (in.)	Pos. Off Left (in.)	Pos Off Back (in.)	Velocity (fpm)	Mounting Option
1	1	22 x 9	60	6.5	1636	Factory Mounted Exhaust Collar(s)

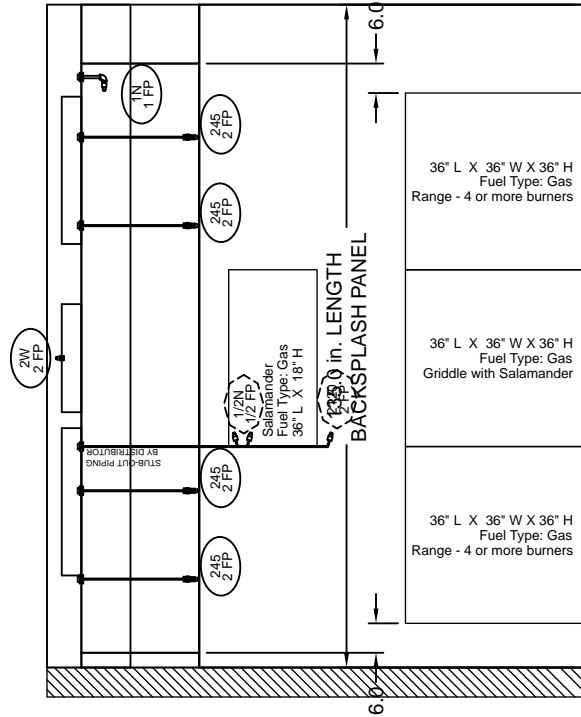
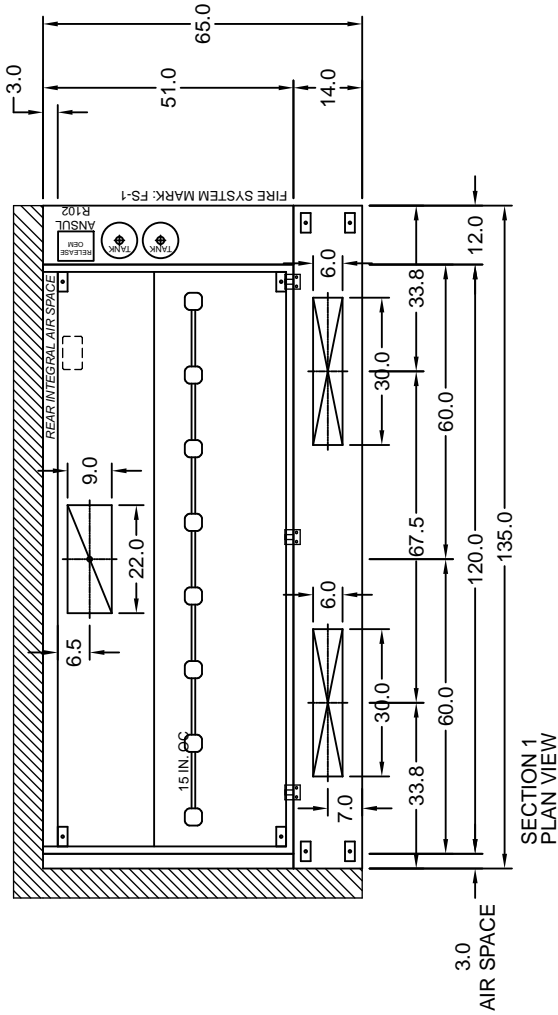
External Supply Plenum Data:

Supply: 1800 CFM MUA: 1800 CFM AC: 0 CFM

Section Num.	Plenum Num.	Side	Type	Length (in.)	Width (in.)	Height (in.)	Volume (CFM)	SP (in. wg)	Insulated
1	1	Front	Air Curtain Supply (ASP)	135	14	10	1800	0.115	No

External Supply Collar Data:

Section Num.	Plenum Num.	Side	Collar Num.	Collar Size (LxW) in. or Diameter (in.)	Pos. Off Left (in.)	Pos. Off Front (in.)	Velocity (fpm)	Mounting Option
1	1	Front	1	30 x 6	33.75	7	720	Factory Mounted Supply Collar(s)
1	1	Front	2	30 x 6	101.25	7	720	Factory Mounted Supply Collar(s)

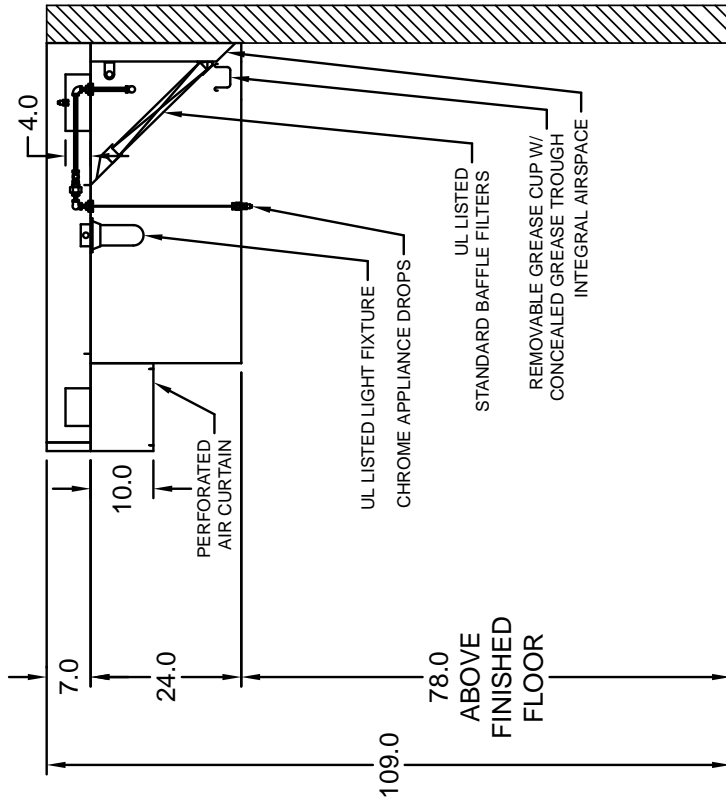


NOTE: All dimensions are in units of in.



Hanger Bracket Locations			
Sec #	Brkt #	Distance Off Left (in)	Distance Off Front (in)
1	1	3.50	2.50
1	2	116.50	2.50
1	3	3.50	47.00
1	4	116.50	47.00

Bracket Mounting Position for 4 Bracket Hood	
3	4
1	2
	BACK
	FRONT



MARK: Hood-1

NOTE: All dimensions are in units of in.



Ansul R-102 Wet Chemical Fire Suppression System

Mounting Option	Mounted in Utility Cabinet (includes pre-piped hood with detection and factory coordinated install)
System Size	4.5 Gallon
Flow Points	Maximum of 16 and 14 are utilized.
Installation Location	The fire system tank connection tee will be on the Right.
Gas Valve	Mechanical Shutoff Valve, 2 in, (Ansul)
	There are 5 appliance drops on this system.
Additional Microswitch	Additional Microswitch (Total of 2 dpdt electrical switches)

NOTE: Must maintain 8 inch clearance between top of hood and pipe connections for installation (includes piping and workspace clearance).

Protected Hood Sections:

- Hood-1 Section 1

Standard Construction Features:

- Prepiping of the kitchen hood
- Fuel shut-off device
- One double-pole, double-throw microswitch for electric appliances
- All detectors, links, release mechanism, tank, and fire suppressant agent.
- One manual pull station for remote mounting (This must be in the path of egress, at a maximum distance of 20 ft (6.1 meters) from the release mechanism).
- An ANSUL® tank and release mechanism housed in a cabinet.
- Final field hook-up to be performed by a non-union certified ANSUL® distributor.
- Factory coordination of final system hook-up between jobsite contact and the assigned ANSUL® distributor.

Notes:

- The installation of the mechanical or electrical type gas valve is the responsibility of the plumbing contractor.
- A double-pole, double-throw microswitch is provided for use with electric appliances. This device also can be used with alarm systems, fan shut down, and electric solenoid gas valves. The wiring of this device is the responsibility of the electrical contractor.
- Permit and Puff test fees.
- Two trips out to the jobsite is included (system installation and test).
- This program applies only to the continental United States. For an ANSUL® hook-up in Alaska, Hawaii, Canada or any International destination, please consult Manufacturer for details and pricing.

Manufacturer HOOD MTD. FIRE CABINET HOOK-UP to consist of:

- Hook-up of detection lines, hook-up of supply lines, mount & hook-up remote manual pull, hook-up mechanical gas valve (If Applicable), charge and tag system.

ANSUL REMOTE MTD. FIRE CABINET HOOK-UP to consist of:

- Hang automan and additional tanks if multiple system, hook-up of detection lines, hook-up of supply lines, mount & hook-up remote manual pull, hookup mechanical gas valve (If Applicable), charge & tag system.

The basic fire suppression system does not include the following:

- Full dump test or system testing other than what is specified in the restaurant system installation manual, or special requirements to satisfy a state or local code.
- Special classes or additional labor for access to security sensitive areas.
- More than one trip to the jobsite or special transportation or overnight lodging requirement in remote areas.
- A shut-off device (shunt-trip breaker) for electric cooking equipment.
- Installation of the gas shut-off valve.
- Special drawings required to satisfy a state or local code.
- Union Labor, Government Labor, or Prevailing wages required for the final field hook-up.
- Any and all electrical connection required to shut down fan(s), electric cooking equipment, activate an alarm system, etc.
- Any dismantling or reassembly required to gain access to the fire suppression piping located on the top of the hood.
- Plan examination fees
- Rough-in conduit for remote pull station or gas valve (for flush mounted pull station).
- Additional remote pull stations.
- Parts or labor required to correct piping due to cooking equipment changes or deviation from plans.
- Any charges for missing or additional parts other than those indicated on the attached Fire Suppression Detail.

Note:

- The customer is responsible for and will be invoiced separately for any additional work performed in accordance with the above items.
- The ANSUL® fire cabinet contains the release assembly that must be mounted within 60 inches (1.5 meters) of the canopy.

XFCC-1

Kitchen Fan Control Center (XFCC)

Standard Construction Features:

- UL Listed to Standard 891
- 12 x 18 x 6 Stainless Steel Enclosure
- Fan Starters (Contactor or Contactor and Overload) - 2 Starters Provided
- Prewired with Wiring Diagram
- Temperature Interlock includes microcontroller with digital display for accurate temperature set point
- Temperature Interlock Complies with International Mechanical Code 2006 section 507.2.1.1

Options & Accessories:

Mounting Option	Ship Loose
Exhaust Fan Quantity	1
Supply Fan Quantity	1
Light Switch	1 - 2 Position Light Switch
Fan Switch	1 - 2 Position Fan Switch
Switch Mounting Location	Utility Cabinet - Right End of Hood - Right Cabinet on
Turn On Exhaust In Fire	Exhaust fans will run when in fire mode.
Thermal Overloads In Cabinet	Thermal overloads are provided in cabinet for motors.
Temp Interlock Sensors (Installed)	1

Controlled Fans:

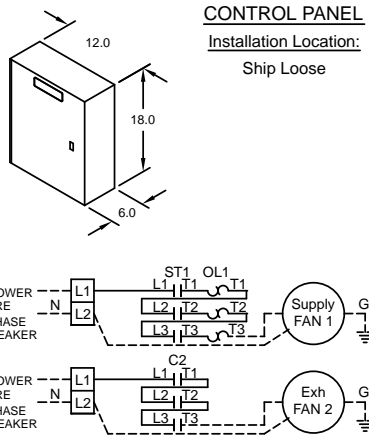
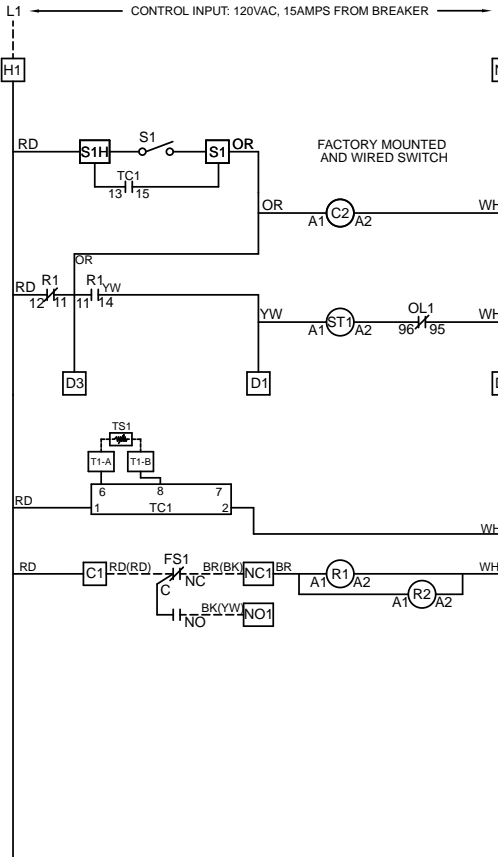
Fan Mark	Fan Type	Supplied By	Phase	HP	Voltage	Speed	RPM	Thermal Overload	NEC FLA	Redundant Starter
SF-1	Supply	Manufacturer	1	0.5	115	1	1725	No	9.800	No
EF-1	Exhaust	Manufacturer	1	0.5	115	1	1000	Yes	9.800	No

Hood Section(s) Controlled by Temperature Interlock:

Hood Mark and Section	Sensor Type	Quantity of Sensors	Sensor Installation
Hood-1 Section 1	Digital	1	Installed in Capture Tank

Kitchen Fan Control Center (XFCC)
Electrical Prewire Package
Edgecombe Community College

PART NO. 110-2-111 REV. 2-2.2
 CAD DRAWING NO. ECO

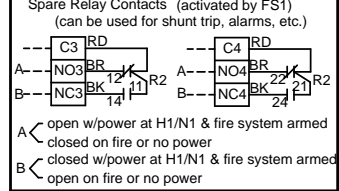
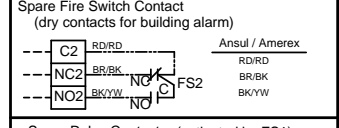


Panel Mark: CP-1

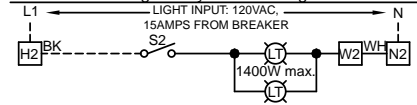
Hood Mark(s):

Motor	Fan Mark	HP	Volt	PH	FLA	Wire	Breaker
F1-S	SF-1	0.5	115	1	9.8	14 ga	15 amp
F2-E	EF-1	0.5	115	1	9.8	14 ga	15 amp

<input checked="" type="checkbox"/> Qty. Fan Switches (0-3)	<input checked="" type="checkbox"/> Exhaust in Fire
<input type="checkbox"/> Qty. Light Switches (0-3)	<input type="checkbox"/> MUA Interface
<input type="checkbox"/> Qty. Temp. Switches (0-1)	<input type="checkbox"/> Lights Out in Fire
<input type="checkbox"/> One Switch for L & F	<input checked="" type="checkbox"/> Fire Relay (#1)
<input checked="" type="checkbox"/> Digital Temperature Interlock	<input type="checkbox"/> Extra Fire Relay (#2)
<input type="checkbox"/> Mounted Sensors - Factory	<input type="checkbox"/> Extra Fire Relay (#3)
<input type="checkbox"/> Mounted Sensors - Field	<input type="checkbox"/> DPDT Relay w/SF
<input type="checkbox"/> Heat Switch / Tempering SW	<input type="checkbox"/> DPDT Relay w/EF
<input type="checkbox"/> Cool Switch	<input type="checkbox"/> Off Delay Relay
<input type="checkbox"/> AD Switch	<input type="checkbox"/> SF Failure Light
<input checked="" type="checkbox"/> Hood Switches	<input type="checkbox"/> EF Failure Light
<input type="checkbox"/> Audible Alarm	<input type="checkbox"/> Fan Failure Light (Appl.)
<input type="checkbox"/> Gas Reset	<input type="checkbox"/> Aux. Supply Contact
<input type="checkbox"/> Power for Gas Solenoid	<input type="checkbox"/> Tie in WWCP
<input type="checkbox"/> Power for Shunt Trip	



Switches Mounting - Utility Cabinet - Right End of Hood



TORQUE:	FIELD WIRING:
TERMINAL BLOCKS = 8 LB.IN	USE MINIMUM
GROUNDING BLOCKS = 8 LB.IN	60" Copper Wire

LABEL DESCRIPTION

EF Exhaust Fan	FACTORY WIRING
SF Supply Fan	FIELD WIRING
ST Starter	ALL WIRING 90°C 14 GA.
OL OverLoad	UNLESS SPECIFIED
C Contactor	
G Ground	
S Switch	
LT Light	
FS Fire Switch	
R Relay	
AF Air Flow Switch	
SV Gas Solenoid	
STB Shunt Trip Breaker	
D Damper	
PB PushButton	
EC Evap Cooler	
TS Temperature Sensor	
TC Temperature Controller	

WIRE COLOR

BK - black
BL - blue
BR - brown
OR - orange
PR - purple
RD - red
YW - yellow
WH - white

NOTES:
 Drawing shown de-energized at L1 (term. #H1), w/ Fire System armed (non-fire mode). (normal operation, R1 & R2 are energized) If wall mounted prewire, or field installed fire system, the fire system microswitches must be field wired.

UL LISTED UNDER SUBJECT 891
 FILE #E313951

Wiring Diagram # 110-2-111

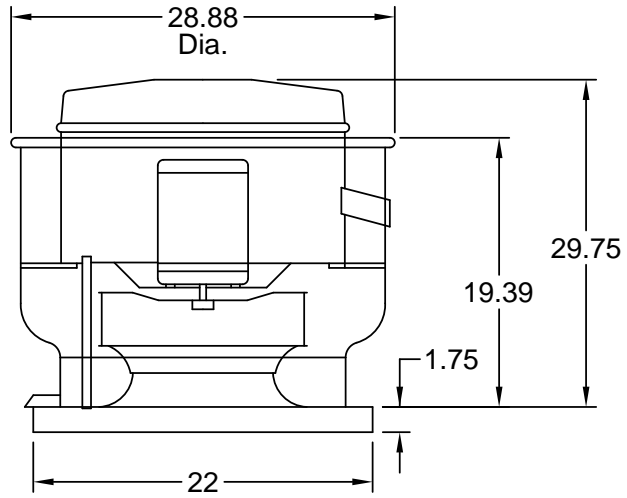
TEMPERATURE INTERLOCK CALIBRATION

- PRESS THE SET BUTTON TO SEE THE FIRST SET POINT. (PRESS THE SET BUTTON TWICE, SLOWLY TO SEE THE SECOND SET POINT)
- PRESS THE UP/DOWN ARROW BUTTON TO CHANGE THE SET POINT.
- PRESS THE SET BUTTON TO VIEW THE CURRENT TEMPERATURE.
- CHECK SYSTEM OPERATION BEFORE MAKING ADDITIONAL ADJUSTMENTS

Model: XRUD-161-VG

Direct Drive Upblast Centrifugal Roof Exhaust Fan

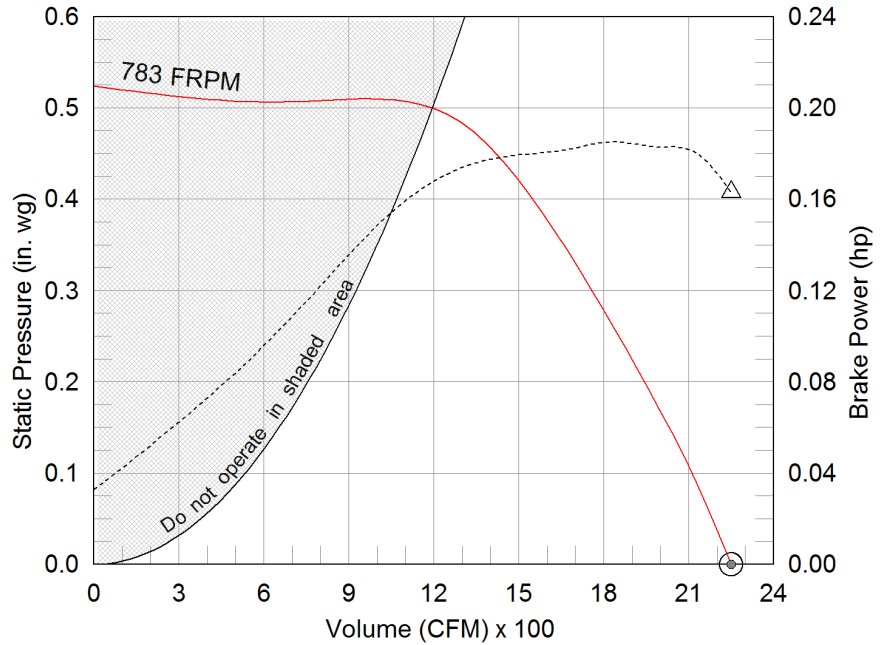
Dimensional	
Quantity	1
Weight w/o Acc's (lb)	74
Weight w/ Acc's (lb)	88
Roof Opening (in.)	18.5 x 18.5



Reference assembly view drawings for actual dimensions with mounted accessories

Performance	
Requested Volume (CFM)	2,250
Actual Volume (CFM)	2,250
External SP (in. wg)	0
Total SP (in. wg)	0
Fan RPM	783
Operating Power (hp)	0.16
Elevation (ft)	436
Airstream Temp.(F)	70
Air Density (ft3)	0.074
Tip Speed (ft/min)	3,407
Static Eff. (%)	0

Motor	
Motor Mounted	Yes
Size (hp)	1/2
V/C/P	115/60/1
Enclosure	ODP
Motor RPM	1000
Windings	1
FLA (Amps)	6.7



- △ Operating Bhp point
- Operating point at Total SP
- Operating point at External SP
- Fan curve
- - - System curve
- - - Brake horsepower curve

Sound Power by Octave Band

Sound Data	62.5	125	250	500	1000	2000	4000	8000	LwA	dBA	Sones
Inlet	70	76	71	66	64	61	54	51	70	58	9.0

Notes:

All dimensions shown are in units of in..
 *FLA - based on tables 150 or 148 of National Electrical Code 2002. Actual motor FLA may vary, for sizing thermal overload, consult factory.
 LwA - A weighted sound power level, based on ANSI S1.4
 dBA - A weighted sound pressure level, based on 11.5 dB attenuation per Octave band at 5.0 ft - dBA levels are not licensed by AMCA International
 Sones - calculated using AMCA 301 at 5.0 ft



Model: XRUD-161-VG

Direct Drive Upblast Centrifugal Roof Exhaust Fan

Standard Construction Features:

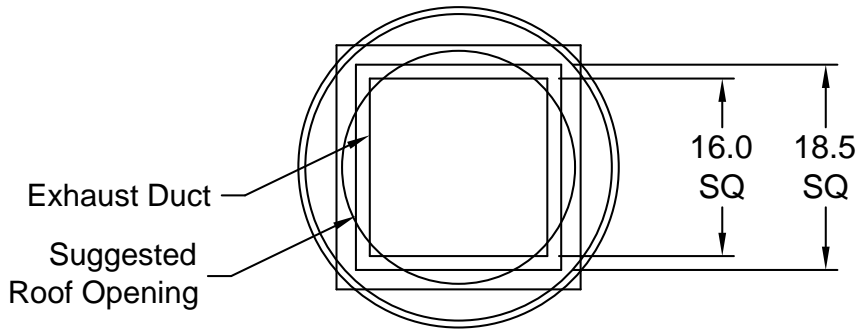
- Aluminum housing - Backward inclined aluminum wheel - Aluminum curb cap with prepunched mounting holes - Drain trough - Ball bearing motors (sizes 98-160), sleeve bearing motors (sizes 60-95) - Motor isolated on shock mounts - Corrosion resistant fasteners

Options & Accessories:

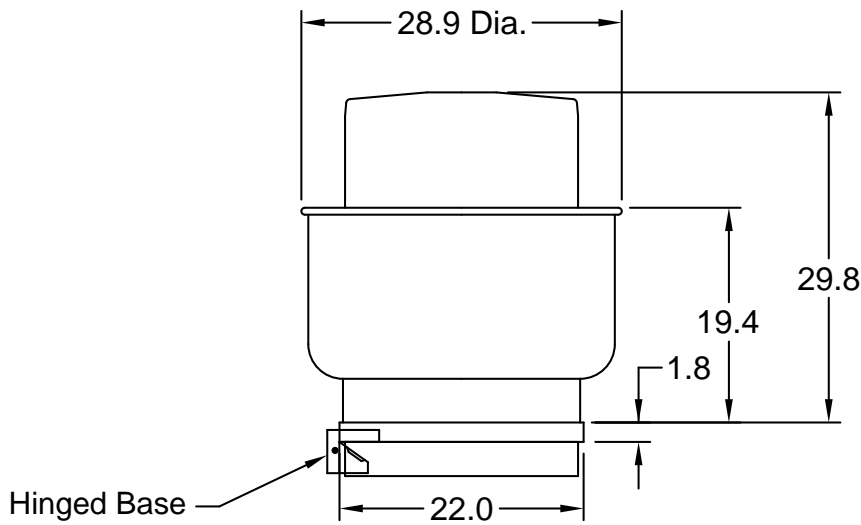
Motor - Vari-Green EC motor w/Mounted Potentiometer Dial
UL/cUL 762 Listed - "Power Ventilators for Rest. Exh. Appliances"
Switch, NEMA-3R, Toggle, Junction Box Mounted & Wired
Hinged Base (Attached)
Curb Seal (Attached)
Grease Trap with Drain Connection (PN 475538)
Unit Warranty: 1 Yr (Standard)

Assembly Drawing

Type: Direct Drive Upblast Centrifugal Roof Exhaust Fan



TOP VIEW



FRONT VIEW

Notes: All dimensions shown are in units of in..

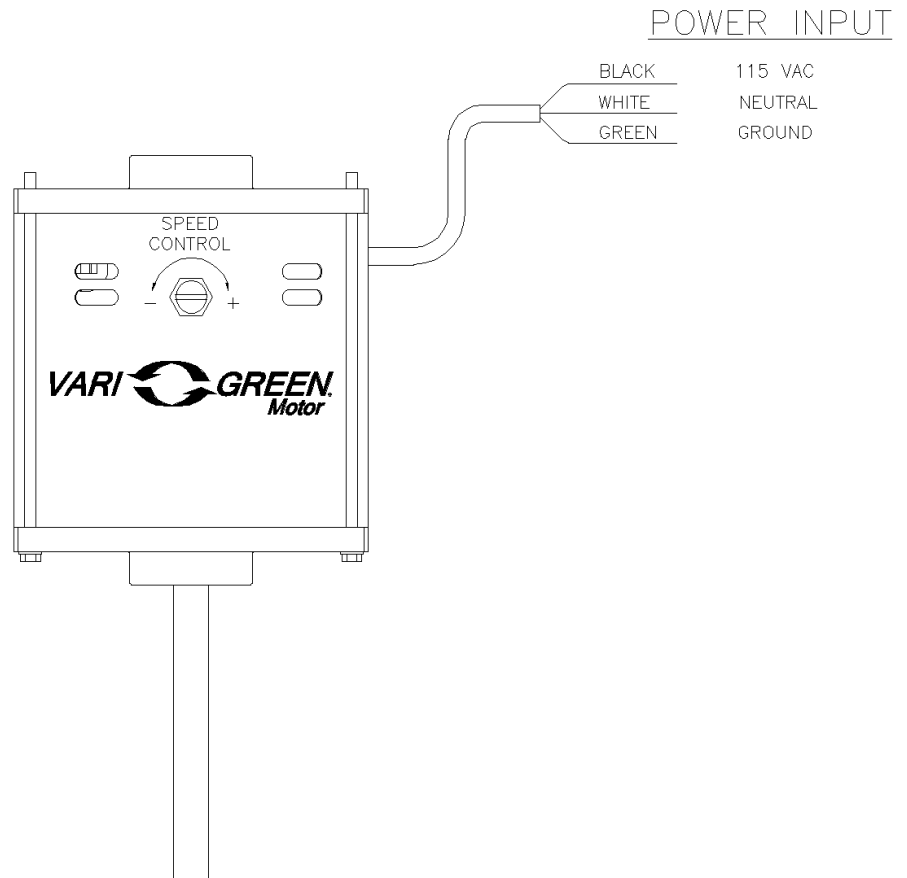
Vari-Green

Motor & Control Options

An EC motor that uses AC input power and internally converts it to DC power. Potentiometer (dial) mounted on the motor enclosure adjusts the speed (RPM) down 80%.

Motor Type: Dial on Motor

Wiring Diagram



XKSFB-109-H15-01

CONSTRUCTION FEATURES AND ACCESSORIES

Unit Overview

Model	Airflow (CFM)	Heating	Cooling	Electrical V/C/P
XKSFB-109-H15-01	1,800	No Heat	No Cooling	115/60/1

Features

- Exterior housing constructed of galvanized steel
- Removable access panels
- Painted or galvanized steel blower and bearing supports
- Forward curved steel blower and motor
- Fan assembly is mounted on vibration isolators
- Motor pulleys are adjustable through 15 hp and fixed for 20 hp and greater
- Fan shaft is mounted in permanently lubricated ball bearings (up through size 118) or ball bearing pillow blocks (size 120 and greater)
- Static free belts
- Corrosion resistant fasteners are standard

Options and Accessories

- Air Flow Arrangement: Outdoor Air Only
- Weatherhood: Aluminum Mesh
- Damper: Inlet
- Outdoor Air Intake Position: End
- Discharge Position: Downblast
- Coating: Galvanized
- Insulation: None
- Access Side: Right-Hand
- Mounting: GPI-28.5/84.75-G16
- Curb Includes: 1 in. Insulation
- Combo Curb: XRUB-161
- Unit Warranty: 1 Yr (Standard)



XKSFB-109-H15-01 PERFORMANCE AND SPECIFICATIONS

Description/Arrangement

Model	Qty	Unit Weight (lb)	Discharge Position	Air Flow Arrangement	Unit Arrangement
XKSFB-109-H15-01	1	236	Downblast	Outdoor Air Only	Horizontal

Design Conditions

Elevation (ft)	Summer DB (F)	Summer WB (F)	Winter DB (F)
436	94	78	19

Air Performance

Type	Volume (CFM)	External SP (in. wg)	Total SP (in. wg)	RPM	Operating Power (hp)	Motor Size (hp)
Supply	1,800	0.25	0.376	891	0.46	1/2

Electrical/Motor Specifications

V/C/P	Unit MCA (amps)	Unit MOP (amps)	Enclosure	Supply Motor RPM	Supply Efficiency
115/60/1	12.3	20	ODP	1725	Standard

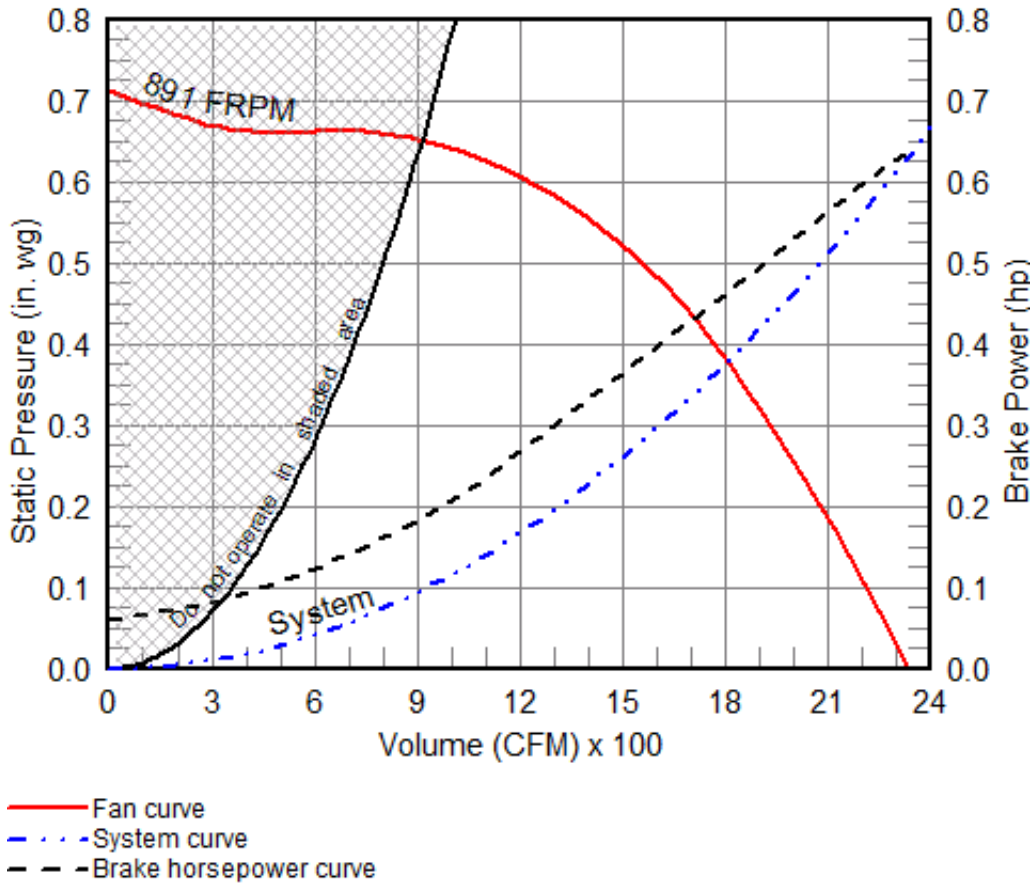
Sound Performance in Accordance with AMCA

Fan	Sound Power by Octave Band								Lwa	dBA	Sones
	62.5	125	250	500	1000	2000	4000	8000			
Supply	90	90	78	69	66	65	63	57	77	66	14.0

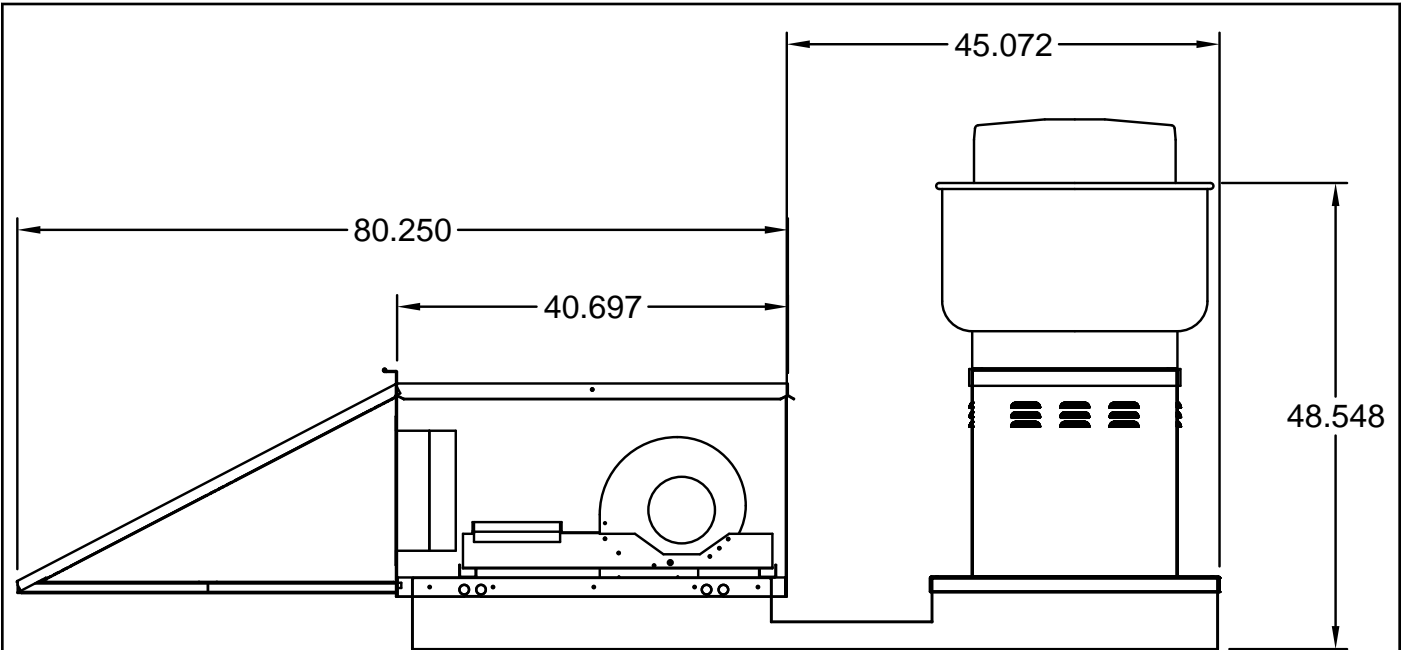
XKSFB-109-H15-01 FAN CURVES

Supply Fan Performance

Volume (CFM)	Supply SP (in wg)	Total SP (in wg)	RPM	Operating Power (hp)	Motor Size (hp)	Fan Quantity
1800	0.25	0.376	891	0.46	1/2	1

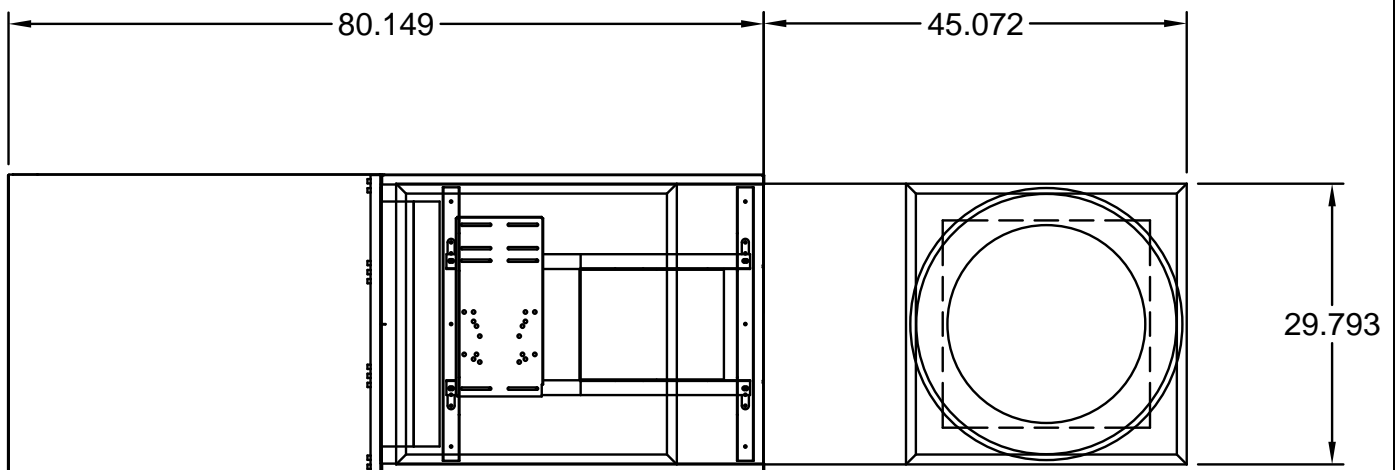


XKSFB-109-H15-01



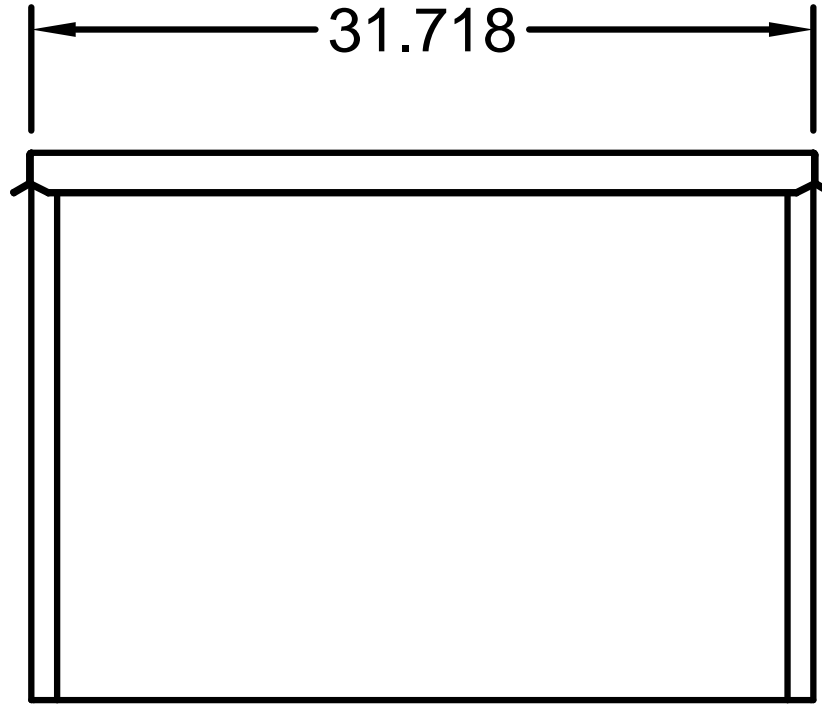
ELEVATION VIEW

* Standard configuration for unit access is on the right-hand side, when looking into the unit intake in the direction of airflow.

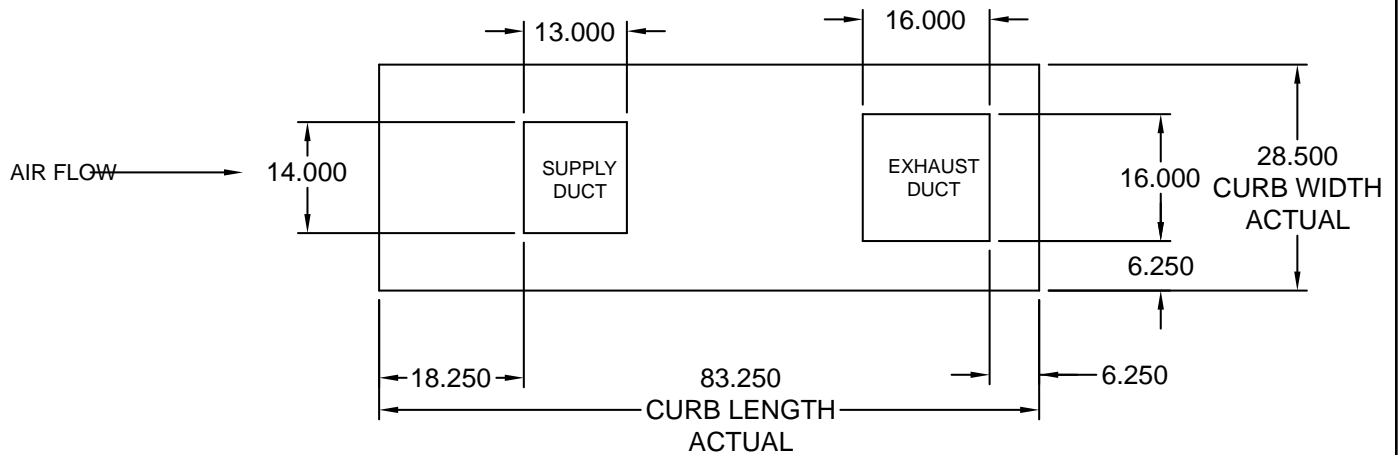


PLAN VIEW

* Standard configuration for unit access is on the right-hand side, when looking into the unit intake in the direction of airflow.



END VIEW



*NOTE: Roof openings can be as large as the curb size - 3.5" or as small as the duct size + 1/2".

FOOTPRINT VIEW

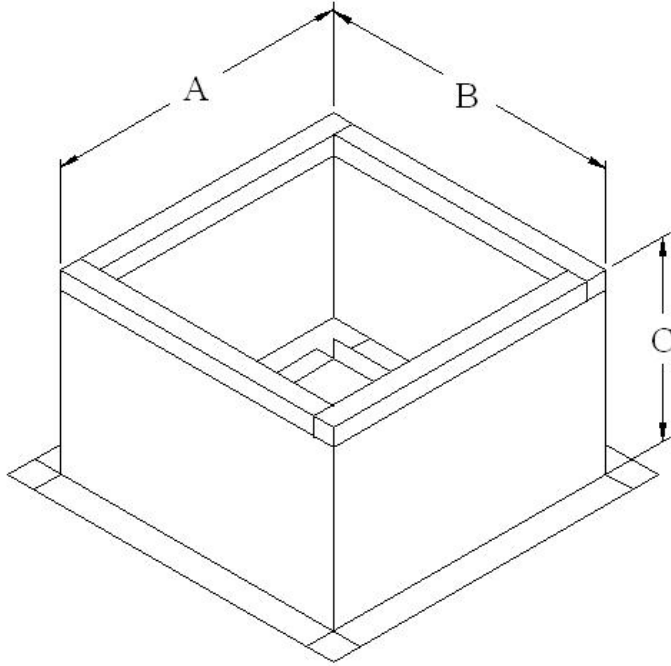
EQUIPMENT SCHEDULE													
Non-Tempered Make-Up Air Unit											Mark: SF-1		
Qty	Accurex Model	Volume (CFM)	External SP		FRPM	Operating Power (hp)	Weight (Lb.)	Motor Information					MCA
			Total SP (in wg)					Size (hp)	V/C/P	Encl:	Motor RPM	Windings	
1	XKSFB-109-H15-01	1800	0.25		891	0.46	236	1/2	115/60/1	ODP	1725	1	12.3
Outlet Sound Power By Octave Band									LwA	dBA	Sones		
62.5	125	250	500	1000	2000	4000	8000						
90.3	89.7	77.8	68.6	66	64.6	62.6	56.7	77.1	66.1	14			
<ul style="list-style-type: none"> • LwA - A weighted sound power level based on ANSI S1.4 • dBA - A weighted sound pressure level base on 11.1 dB attenuation per octave band at 5.0 ft. • Noise Criteria (NC) based on an average attenuation of 11.5 dB per octave band at 5.0 ft. 													
OPTIONS AND ACCESSORIES													
Air Flow Arrangement - Outdoor Air Only - 100% OSA WeatherHood Filter - Aluminum Mesh Inlet Damper Control - Gravity Discharge Position - Downblast Blower Isolation - Neoprene Factory Finish - Galvanized Roof Curb - GPI - Galvanized - 1 in Insulated													

XKSFB-109-H15-01

Roof Curb

CONSTRUCTION FEATURES

- Welded aluminum (0.064 in.) or galvanized steel (18 ga.) • Straight sided • 2 in. mounting flange • 1 in., 3 lb. density insulation
- Wood nailer



Dimension	Description	Value (in.)
A	Length	83.25
B	Width	28.5
C	Height	16

* All dimensions are actual

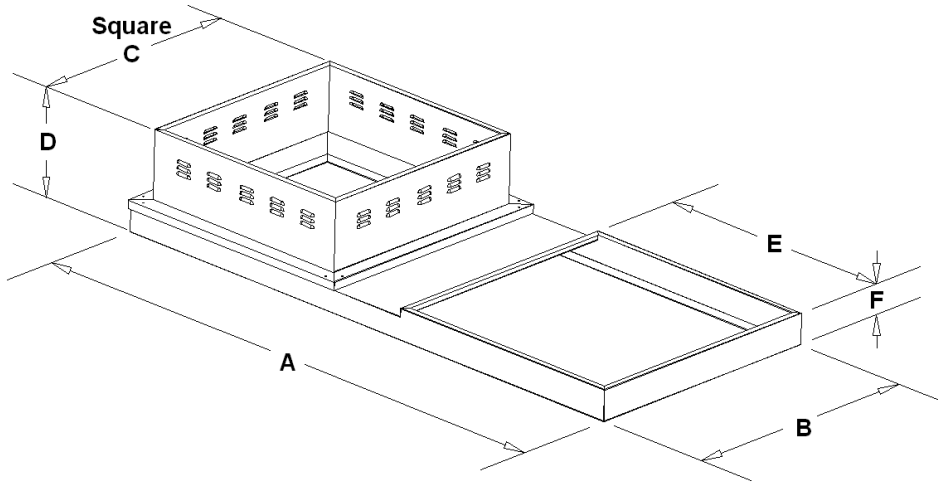
ADDITIONAL NOTES

- The Roof Opening Dimension may NOT match the Structural Roof Support Dimension.
- Please reference the submittal footprint diagram for exact roof curb dimensions.
- Curbs with length > 143.5 will ship knocked-down
- Curbs with length > 119.5 may ship knocked-down, dependent on manufacturing location

XKSFB-109-H15-01 FAN PACK EXTENSION

CONSTRUCTION FEATURES

- Constructed of galvanized steel
- Used with combination upblast centrifugal exhaust fan/make-up air unit on common curb
- Vented exhaust fan extension



Housing	CUBE	A (in.)	B (in.)	C (in.)	D (in.)	E (in.)	F (in.)
5	098 - 131	45.5	17.75	17.75	27	19	7.5
8	098 - 131	61	34.5	17.75	27.5	19	7.5
8	141 - 161	61	34.5	20.75	26	19	7.5
8	180 - 200	61	34.5	28.75	24	19	7.5
15	098 - 131	83.75	29.5	17.75	31.25	37.5	7.5
15	141 - 161	83.75	29.5	20.75	29.25	37.5	7.5
15	180 - 200	83.75	29.5	28.75	23.25	37.5	7.5
15	220 - 240	83.75	29.5	33.5	23.25	37.5	7.5
25	220 - 240	105.5	38	33.5	27	50	7.5
25	300	105.5	38	39.5	22.5	50	7.5
25	360	105.5	38	44.5	22.5	50	7.5

ADDITIONAL NOTES

- There must be at least 10 ft of horizontal or 3 ft of vertical separation
- The combination curb will not work if the exhaust fan is ordered with a VCE or a hinged base. Please contact the factory.

Warranty Information

Limited Warranty - Unit

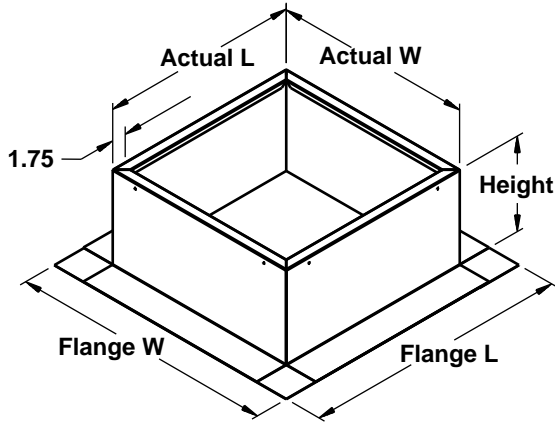
Accurex warrants this equipment to be free from defects in material and workmanship for a period of 1 year(s) from the purchase date. Any component which proves defective during the warranty period will be repaired, or replaced, at Accurex's sole option when returned to our factory, transportation prepaid.

The warranty does not include labor costs associated with troubleshooting, removal, or installation. Accurex will not be liable for any consequential, punitive, or incidental damages resulting from use, repair, or operation of any Accurex product.

This warranty is exclusive, and is in lieu of all other warranties, whether written, oral or implied, including the warranty of merchantability and the warranty of fitness for a particular purpose.

GPF Roof Curb

STANDARD CONSTRUCTION FEATURES



- Welded Aluminum (0.064 in.) or galvanized (18 ga) construction
 - Straight sided
 - 5 in. roof mounting / flashing flange
 - 1 in. 3 lb density insulation
- Roof Opening - The Maximum roof opening dimension should not be greater than the "Actual" top outside dimension minus 2 in.. With dampers, the Minimum roof opening dim. should be at least 2.5 in. more than the damper dim.

NOTES:

- * The Roof Opening Dim. may NOT be the Structural Opening Dim.
- * Tray - Damper Tray is optional and must be specified. Tray size is same as damper size.
- * Height - Available from 8 in. to 42 in. as specified in 0.5 in. increments.
- * Security Bars are optional & must be specified. Frames & gridwork are all 10 ga steel. Gridwork is welded to the frame & the frame is welded to the curb. To prevent corrosion, they are coated w/Greenheck's high...

NOTES: All dimensions shown are in units of inches

Mark	Qty.	Cap W x L	Actual W x L	Flange W x L	Height	Damper Tray W x L
EF-1	1	22 x 22	21 x 21	31 x 31	0	